

TPV

PORTFOLIO · 2026

TPV · AUSTRALIA · EST. 2005

# Tim Partos Visualisation

Architectural visualisation that sells the project.

TIMPARTOS.COM

SELECTED WORK · 7 PROJECTS

ABOUT THE STUDIO

# Twenty years quietly turning the biggest projects in the country into images.

TPV is a small Australian studio led by Tim Partos. We don't run a 200-person factory; we run a tight team of senior artists, working with builders, developers and architects on the projects they cannot afford to get wrong.

01

## Photoreal, never plastic

Real light, real materials, real life. If a render reads as CGI, we haven't done our job.

02

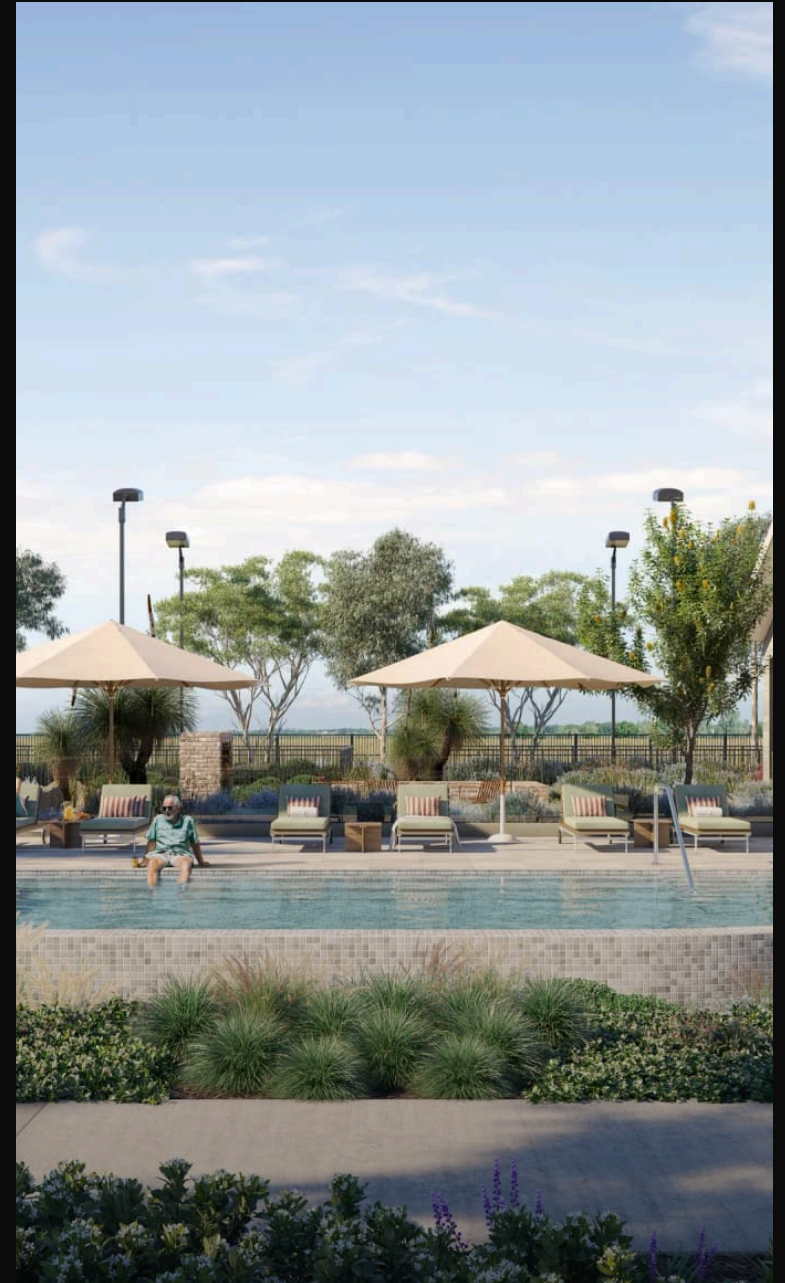
## Honest to the brief

We push back when something won't read on screen — and we do it early, when there's time to fix it.

03

## On time, every time

Twenty years of campaigns. We've never missed a launch.





## MASTERPLAN

# Halcyon Horizon

Stockland Halcyon · Victoria, Australia · 2024

A full-scope visualisation program for Stockland's Halcyon Horizon community — Hero clubhouse exteriors, interior amenities, 3D and aerial masterplans, streetscape compositions, and a library of facade variations to compliment Stockland's design catalogue.

### SCOPE

Exterior renders

Interior renders

Facility & masterplan renders

House facade renders

Photomatched aerial composite





COMMERCIAL

# Actventure Surf Park & Resort

Sanad Capital · Queensland, Australia · 2023

Conceptual exterior renders and photo matched aerial composites for Sanad Capital's surf park and resort development on the Sunshine Coast — used through approvals and early marketing campaigns.

## SCOPE

Conceptual exterior renders

Photomatched aerial composite





## MASTERPLAN

# Halcyon Yandina

Stockland Halcyon · Queensland, Australia · 2025

Stockland's Halcyon Yandina community in the Sunshine Coast hinterland. Featuring the community entrance experience, clubhouse facade, pool + fitness, outdoor garden, interior bar and function space, plus a detailed roof-off facilities and masterplan.

## SCOPE

Exterior renders

Interior renders

Facility & masterplan renders





RESIDENTIAL

# Vivacity Coral Cove

Vivacity Property · Queensland, Australia · 2025

A bespoke coastal community for Vivacity Property —  
Showcasing two standout clubhouse exteriors and an  
expansive pool terrace, highlighted by curated  
landscaping, elegant design, and subtle finishes.

## SCOPE

Exterior renders

Interior renders

House facade renders





COMMERCIAL

# Good Life RV & Lifestyle Resort

AHC Limited · Queensland, Australia · 2022

A lifestyle resort by AHC Limited — hero clubhouse pool exterior, arrival entry, two main-hall interior views and the on-site gym.

SCOPE

Exterior renders

Interior renders





MASTERPLAN

# Halcyon Highlands

Stockland Highlands · Victoria, Australia · 2024

Stockland Highlands community – Featuring the clubhouse entry, interior and amenities including bowls and pickleball facilities, anchored by the masterplan and facility plan renders.

## SCOPE

Exterior renders

Interior renders

Facility & masterplan renders





RESIDENTIAL

# Elara

DC8 Studio · New South Wales, Australia · 2024

A boutique residential release for DC8 Studio —  
Featuring streetscape compositions across multiple lot  
types, interior CGI and sectional render.

## SCOPE

Exterior renders

Interior renders

Section render



# Every output your launch needs.

Produced under one roof, overseen by a single senior creative.

01

## Exterior renders

Photorealistic exterior CGI for residential, multi-res, and commercial projects. From street-level marketing hero shots to aerial context views, lit and dressed to match the conditions your campaign needs.

02

## Interior renders

Carefully art-directed interior CGI, with real-world finishes, FF&E from your specified suppliers, and lighting that reads on screen and on paper.

03

## Animation & flythrough

Storyboarded animations and flythroughs — exterior approach, interior journey, drone-style context sweeps — delivered in 4K with custom sound design when required.

04

## 3D Masterplan & Facility plans

A 3D masterplan visualises long-term design goals by illustrating how buildings, streets, and open spaces connect.

05

## Aerial masterplan composite

Bring your vision to life with realistic, high-impact aerial composites. By blending precise 3D modelling with site photography, we create a vivid bird's-eye render that illustrates how buildings, infrastructure, and green spaces interact.

06

## Façade renders

Transform your project with photorealistic facade visualisation — the ultimate tool for design precision and confidence. Whether you're perfecting a dream home or securing a multi-unit development, our facade renders turn concepts into a clear reality.

TPV

END · PORTFOLIO 2026

# Start a project.

Architectural visualisation — photoreal exterior and interior CGI for residential, multi-res and commercial projects, plus animation flythroughs and aerial masterplan composites.

EMAIL

[info@timpartos.com](mailto:info@timpartos.com)

PHONE

+61 415 864 465

WEBSITE

[timpartos.com](http://timpartos.com)

STUDIO

Sunshine Coast, QLD

ABN 40 323 049 156